

Reissued: 28-Dec-04

Model: Model C- P1 Paper Feed Unit (G360)	Date: 7-Dec-04	No.: MG360001a
---	----------------	----------------

MB Correction

The items in " " have been cancelled.

Modified Article: Environmental Correspondances		Prepared by: A. Ishiyama	
From: 1st Technical Support Sec. Service Support Dept.			
Reason for Modification:	<input type="checkbox"/> Parts catalog correction <input type="checkbox"/> To facilitate assembly <input checked="" type="checkbox"/> Part standardization	<input type="checkbox"/> Vendor change <input type="checkbox"/> To improve reliability <input checked="" type="checkbox"/> Other	<input type="checkbox"/> To meet standards ()
Modification Schedule:	From September '04 production		

Old part number	New part number	Description	Q'ty	Int	Page	Index	Note
[Motor]							
C4085700		Stepper Motor DC24V	1→1	X/O	5	8	1
	→ AX040216	Stepper Motor MM42: UD2A					
	→ G3925330	Harness - Motor	0→1	-/-	5	35	1
[PCB]							
G3605100		PCB Ass'y	1→1	X/O	5	9	1, 2
	→ G3605120	PCB - Bank : P2					
[Clutch]							
G3603250	G3923250	Magnetic Clutch : Paper Feed	1→1	X/O	5	11	1
[Spring]							
G0292657	G3922657	Compression Spring : Paper Feed	1→1	X/O	5	33	1
[Bracket]							
G3603221	G3603222	Motor Bracket	1→1	X/O	5	6	1
[Screws]							
AA143716	AA143820	Stepped Screw	1→1	X/O	7	46	4
G0044636	AA143824	Stepped Screw M3	1→1	X/O	7	23	4
G0124617	AA143544	Screw M3	1→1	X/O	9	49	4
G0487152	AA143822	Stepped Screw M3.5	1→1	X/O	9	29	4

Change: Material change, circuit board change (PCB).

Reason:

1. To change the materials used in these parts (chromium, lead) to a non-toxic type.
2. To handle the faster ppm speed of the next model.

Reissued: 28-Dec-04

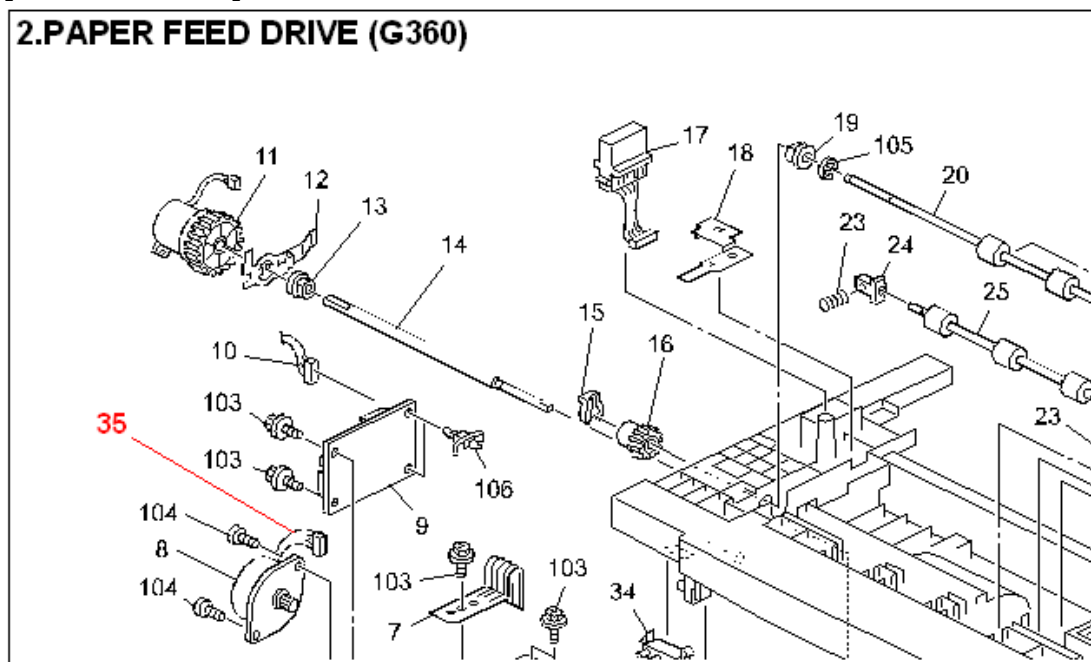
Model: Model C- P1 Paper Feed Unit (G360)

Date: 7-Dec-04

No.: MG360001a

[G3925330: 5-35]

2.PAPER FEED DRIVE (G360)



Model: Model C- P1 Paper Feed Unit (G360)		Date: 7-Dec-04	No.: MG360002
Modified Article: Environmental Considerations Part 2		Prepared by: A. Ishiyama	
From: 1st Technical Support Sec. Service Support Dept.			
Reason for Modification:	<input type="checkbox"/> Parts catalog correction <input type="checkbox"/> To facilitate assembly <input type="checkbox"/> Part standardization	<input type="checkbox"/> Vendor change <input type="checkbox"/> To improve reliability <input checked="" type="checkbox"/> Other	<input type="checkbox"/> To meet standards ()
Modification Schedule:	From December '04 production		

Old part number	New part number	Description	Q'ty	Int	Page	Index	Note
[Roller]							
G3603115	G3603114	Middle Drive Roller	1→1	X/O	5	20	
G3603116	G3923116	Middle Driven Roller	1→1	X/O	5	25	
[Shaft]							
G3603112	G3603113	Paper Feed Shaft	1→1	X/O	5	14	
[Plate]							
G3601087	G3921086	Spring Plate : Paper Tray : Ass'y	1→1	X/O	7	4	

Change/Reason: The material used in these parts (cadmium) was changed to a non-toxic type.

Model: Model C- P1 Paper Feed Unit (G360)		Date: 25-Mar-05	No.: MG360003
Modified Article: Environmental Correspondances		Prepared by: A. Ishiyama	
From: 1st Technical Support Sec. Service Support Dept.			
Reason for Modification:	<input type="checkbox"/> Parts catalog correction <input type="checkbox"/> To facilitate assembly <input type="checkbox"/> Part standardization	<input type="checkbox"/> Vendor change <input type="checkbox"/> To improve reliability <input checked="" type="checkbox"/> Other	<input type="checkbox"/> To meet standards ()
Modification Schedule:	From December '04 production		

Old part number	New part number	Description	Q'ty	Int	Page	Index	Note
G0963053	G1022818	Tray Bottom Plate Adhesion	1→1	X/O	3	14	
G0292608	52152713	Base Pad	1→1	X/O	3	15	

Change/Reason: The material used in these parts (lead) was changed to a non-toxic type.